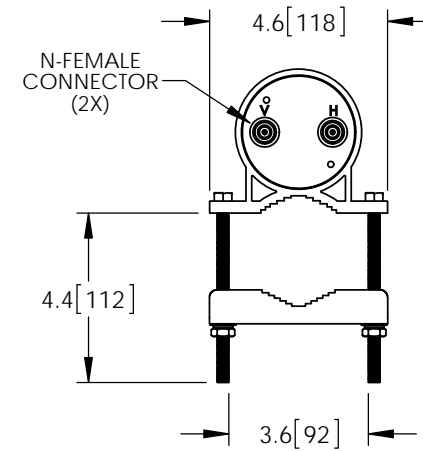
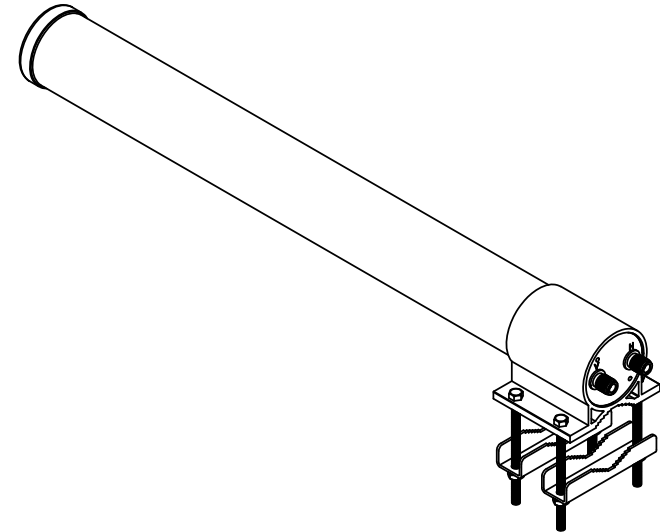
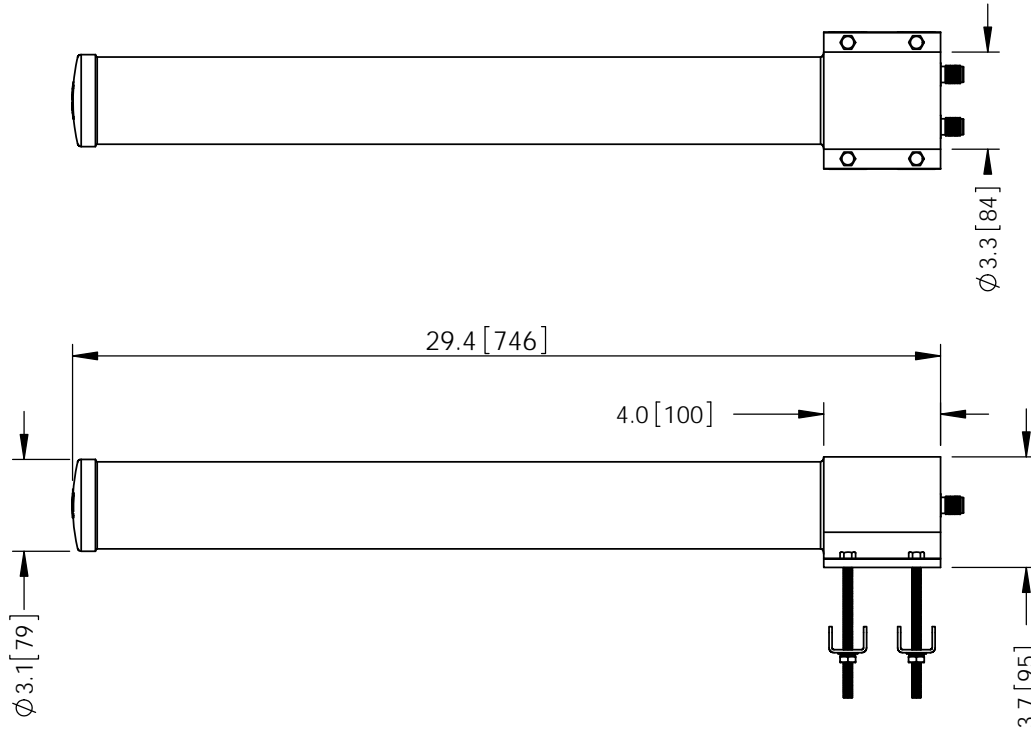


THE INFORMATION CONTAINED IN THIS DRAWING IS THE SOLE PROPERTY OF L-COM, INC. ANY REPRODUCTION IN PART OR WHOLE WITHOUT THE WRITTEN PERMISSION OF L-COM, INC. IS PROHIBITED.


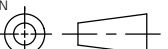
REVISIONS			
REV	DESCRIPTION	DATE	APPROVED
A	INITIAL RELEASE	11/02/16	D.FRISIELLO



NOTES:
PACKAGING:
COMPONENT SHALL BE PACKAGED IN ACCORDANCE WITH L-COM SPEC PKG-00087.

- ALL DIMENSIONS FOR REFERENCE -

REGULATORY COMPLIANCE:
CE2011/65/EU(RoHS DIRECTIVE)

UNLESS OTHERWISE SPECIFIED, DIMENSIONS ARE IN INCHES [mm] DIMENSIONAL TOLERANCES: .X = ± 1 [2.54] .XX = ± .01 [.25] .XXX = ± .005 [.13] ANGULAR TOLERANCES: ALL = ± 1°	APPROVALS	DATE	 50 HIGH STREET NORTH ANDOVER, MA 01845			
	DRAWN BY B.PUCHASKI	11/02/16				
	CHECKED BY P.PESA	11/02/16	CATEGORY			
	APPROVED BY P.PESA	11/02/16	ANTENNA			
	CONFIGURATION DETAILS OF UNDIMENSIONED FEATURES MAY VARY		PRODUCT DESCRIPTION 2.4/5.8GHz 6dBi DUAL POLARITY OMNI ANTENNA W/ N-FEMALE CONNECTORS			
PROJECTION 	COLOR VARIATIONS MAY OCCUR		SIZE	FSCM NO.	DWG. NO.	REV.
			A	43321	HG2458-06DPU2	A
			SCALE: NONE	CAD FILE: HG2458-06DPU2.SLDDRW		SHEET 1 OF 1