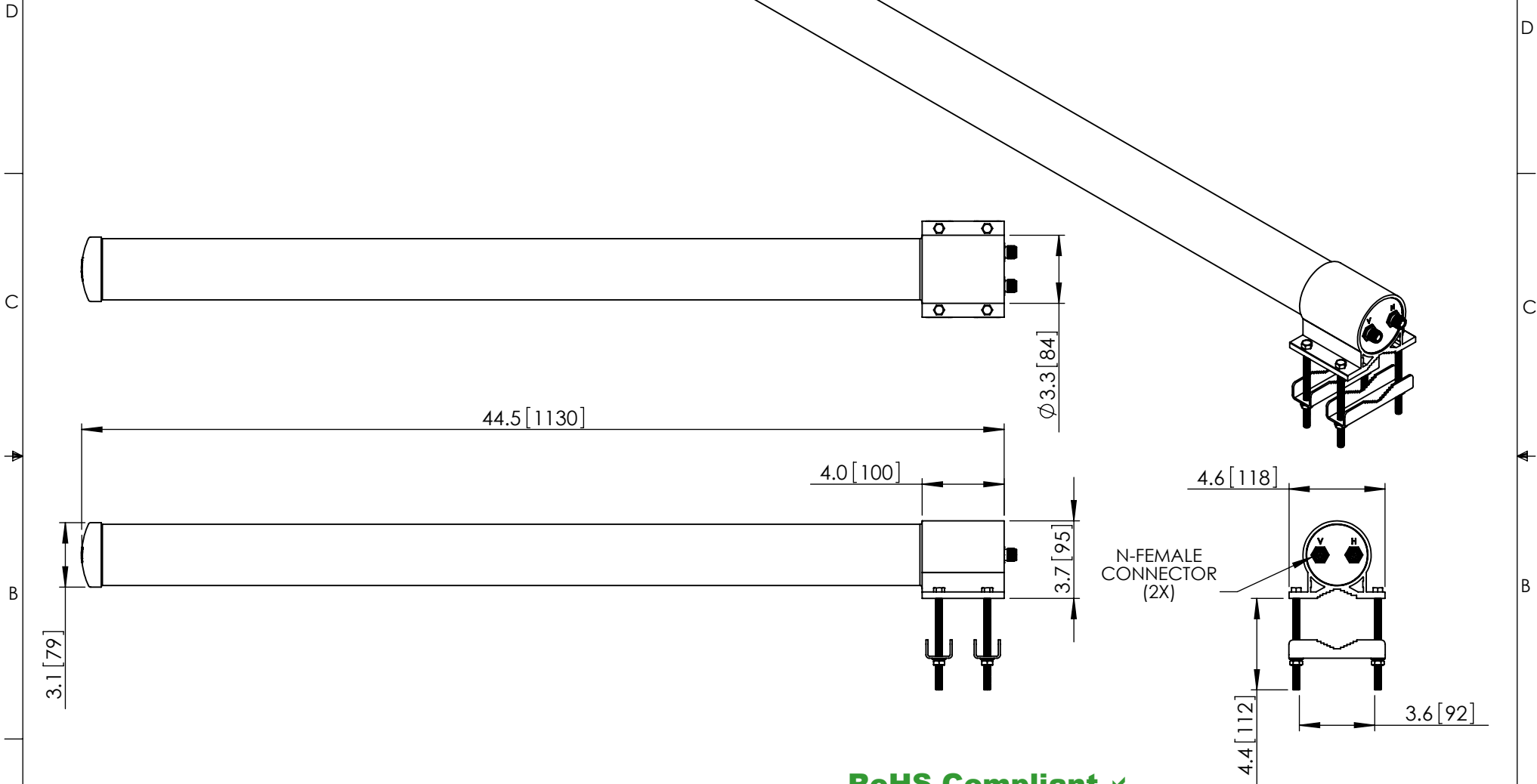


THE INFORMATION CONTAINED IN THIS DRAWING IS THE SOLE PROPERTY OF L-COM, INC. ANY REPRODUCTION IN PART OR WHOLE WITHOUT THE WRITTEN PERMISSION OF L-COM, INC. IS PROHIBITED.

REVISIONS			
REV	DESCRIPTION	DATE	APPROVED
A	INITIAL RELEASE	1/11/12	D.GRIFFIN



RoHS Compliant ✓

NOTES:  
 PACKAGING:  
 COMPONENT SHALL BE PACKAGED IN ACCORDANCE  
 WITH L-COM SPEC PKG-00087.

- ALL DIMENSIONS FOR REFERENCE -

UNLESS OTHERWISE SPECIFIED, DIMENSIONS ARE IN INCHES [mm]  DIMENSIONAL TOLERANCES: .X = ±.1 .XX = ±.01 .XXX = ±.005  ANGULAR TOLERANCES: ALL = ± 1°  PROJECTION 	APPROVALS	DATE	45 BEECHWOOD DRIVE NORTH ANDOVER, MA 01845	
	DRAWN BY B.PUCHASKI	01/10/12		
	CHECKED BY P.PESA	01/10/12	CATEGORY ANTENNA	
	APPROVED BY P.PESA	01/10/12	PRODUCT DESCRIPTION 2.4GHz 13dBi DUAL POLARITY OMNI ANTENNA W/N-FEMALE CONNECTORS	
CONFIGURATION DETAILS OF UNDIMENSIONED FEATURES MAY VARY		SIZE <b>A</b>	FSCM NO. <b>43321</b>	DWG. NO. HG2413DPU
COLOR VARIATIONS MAY OCCUR		SCALE: NONE	CAD FILE: HG2413DPU.SLDDRW	REV. <b>A</b>
		SHEET 1 OF 1		