

6

5

4

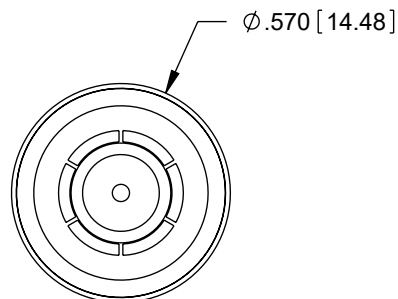
3

2

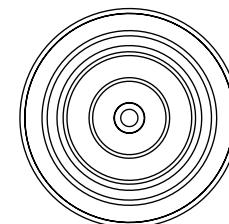
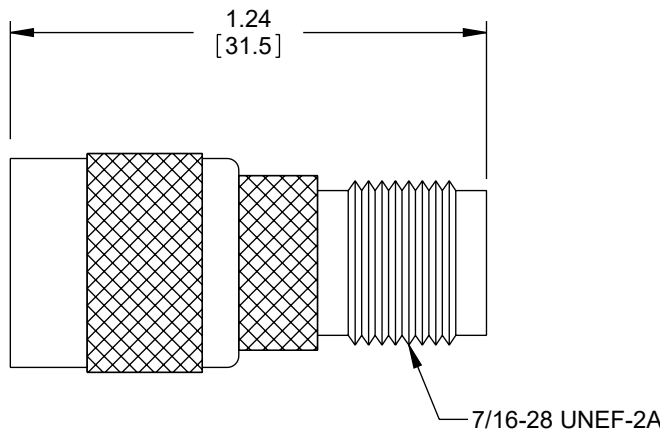
1

REVISION				
ZONE	REV	DESCRIPTION	DATE	CHANGED BY
	C	ECO-14591	05/30/2025	KGLEBOVA
APPROVED			DWANG	

DESCRIPTION	MATERIAL	FINISH
BODY	BRASS	NICKEL PLATE
INSULATOR	ACETAL	-
CONTACTS	BRASS	GOLD PLATE



TNC MALE
CONNECTOR



TNC FEMALE
CONNECTOR

NOTES:

- ELECTRICAL:
IMPEDANCE: 50 OHM
FREQUENCY RANGE: DC TO 1 GHz
VOLTAGE RATING: 500 VOLTS PEAK
- MISCELLANEOUS:
ALL DIMENSIONS ARE FOR REFERENCE ONLY.
- COMPONENT SHALL BE INDIVIDUALLY PACKAGED IN
ACCORDANCE WITH L-COM SPECIFICATION PS-0031.

REGULATORY COMPLIANCE:
EU RoHS DIRECTIVE (MOST RECENT RELEASED VERSION).

THE INFORMATION CONTAINED IN THIS DRAWING IS THE SOLE PROPERTY OF INFINITE ELECTRONICS, INC. ANY REPRODUCTION IN PART OR WHOLE WITHOUT THE WRITTEN PERMISSION OF INFINITE ELECTRONICS, INC. IS PROHIBITED. THESE COMMODITIES, TECHNOLOGY OR SOFTWARE WERE EXPORTED FROM THE UNITED STATES IN ACCORDANCE WITH THE EXPORT ADMINISTRATION REGULATIONS. DIVERSION CONTRARY TO U.S. LAW PROHIBITED.

6



5

4

3

2

1

UNLESS OTHERWISE SPECIFIED LEADING DIMENSIONS ARE INCHES DIMENSIONS IN [] ARE MILLIMETERS		<div>L-com® an INFINIT® brand</div> <div>Website: www.L-com.com Phone: 1.800.341.5266 1.978.682.6936</div>		<div></div> <div>INTERPRET ALL DIMENSIONS AND TOLERANCES PER ASME Y14.5</div>	
TOLERANCES: <div>X = ±.2 [5] .XX = ±.02 [0.5] .XXX = ±.005 [0.13]</div> <div>FRACTIONS ± 1/32 ANGLES ± 1°</div>				SCALE NONE	SHEET 1 OF 1
CABLE LENGTH TOLERANCES: ≤12 [305] = +1 [25] / -0 >12 [305] ≤ 60 [1524] = +2 [51] / -0 >60 [1524] ≤ 120 [3048] = +4 [102] / -0 >120 [3048] ≤ 300 [7620] = +6 [152] / -0 >300 [7620] = +5% / -0		DESCRIPTION ADAPTER TNC-M/TNC-F			
ALL DIMENSIONS ARE FOR REFERENCE ONLY AND SUBJECT TO CHANGE WITHOUT NOTICE UN-DIMENSIONED/NON-CRITICAL FEATURES MAY VARY IN SIZE AND LOCATION COLORS MAY VARY		SIZE A	CAGE CODE 43321	DRAWN BY R.POLUBINSKI	ITEM NO. BA4000
					REV C